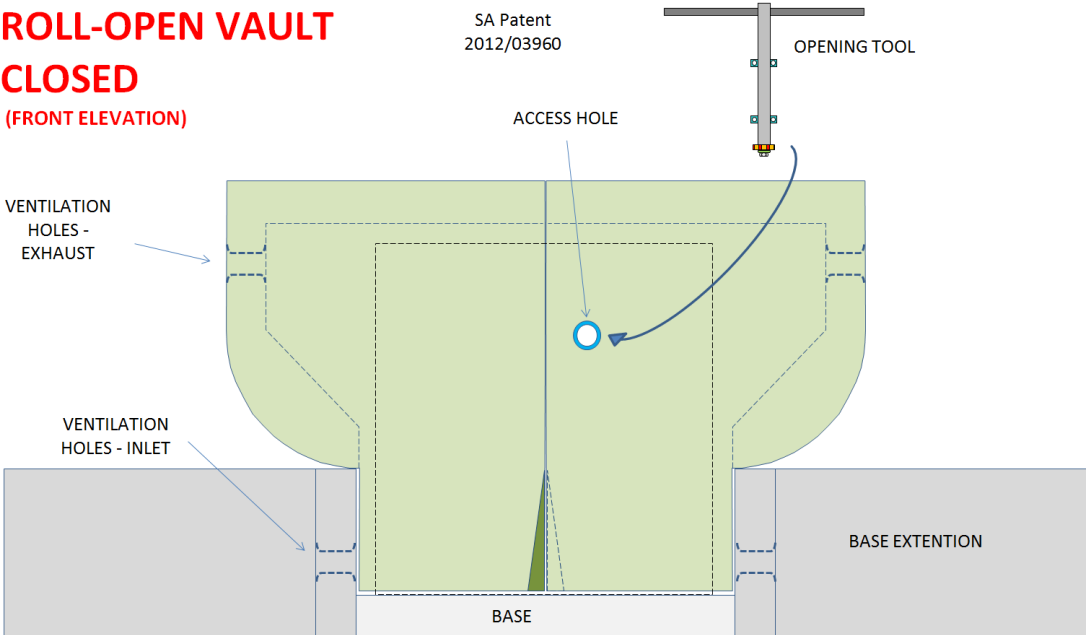


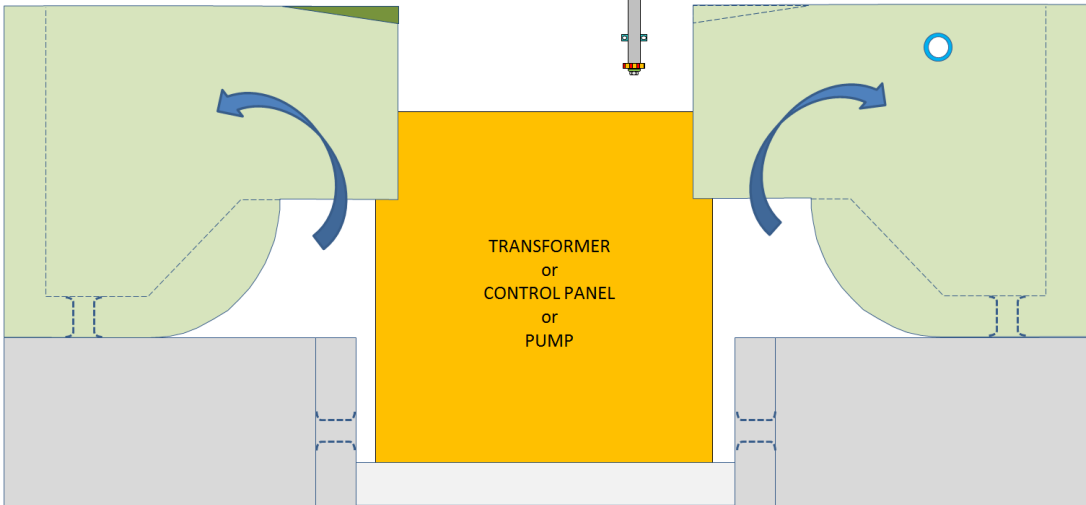
ROLL-OPEN VAULT CLOSED

(FRONT ELEVATION)

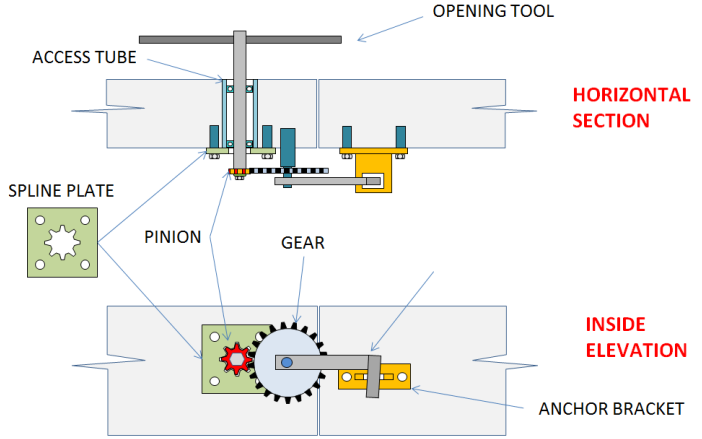


ROLL-OPEN VAULT - OPEN

(FRONT ELEVATION)



LOCKING MECHANISM



ADVANTAGES

- (a) It is quick to unlock and minimal effort is required to roll it open.
- (b) It is safe - the rolling action stops immediately the pushing stops.
- (c) Once open there is full access on both sides for maintenance etc.
- (d) The opening tool / spline-plate combination can be uniquely customised - where hundreds of variations are possible.
- (e) 60 MPa reinforced concrete means extreme protection against oxy-acetylene cutting torches, and angle grinders run out of depth.

OPENING SEQUENCE

- (a) Insert pinion of opening tool into access tube, through the spline-plate, and on till it engages the teeth of the 'gear'.
- (b) Turn the handle of the tool until the locking lever comes out of the anchor bracket.
- (c) The lid is now unlocked. Roll both halves of the vault through 90 degrees.

The roll-open vault is suitable for securing transformers, control panels & pumps etc.

See www.damsforafrica.com for other products in our range, which are variously suitable for securing pump-houses, sub-stations, valve-chambers, transformers, control panels, boreholes, etc.