

SLIDE-LID VAULT

SA Patent 2012/08045

Manufactured & installed by Dams for Africa (Pty) Ltd. Contact details: nicholas@damsforafrica.com, tel 011 475 8381/2764, mobile 082 416 8958

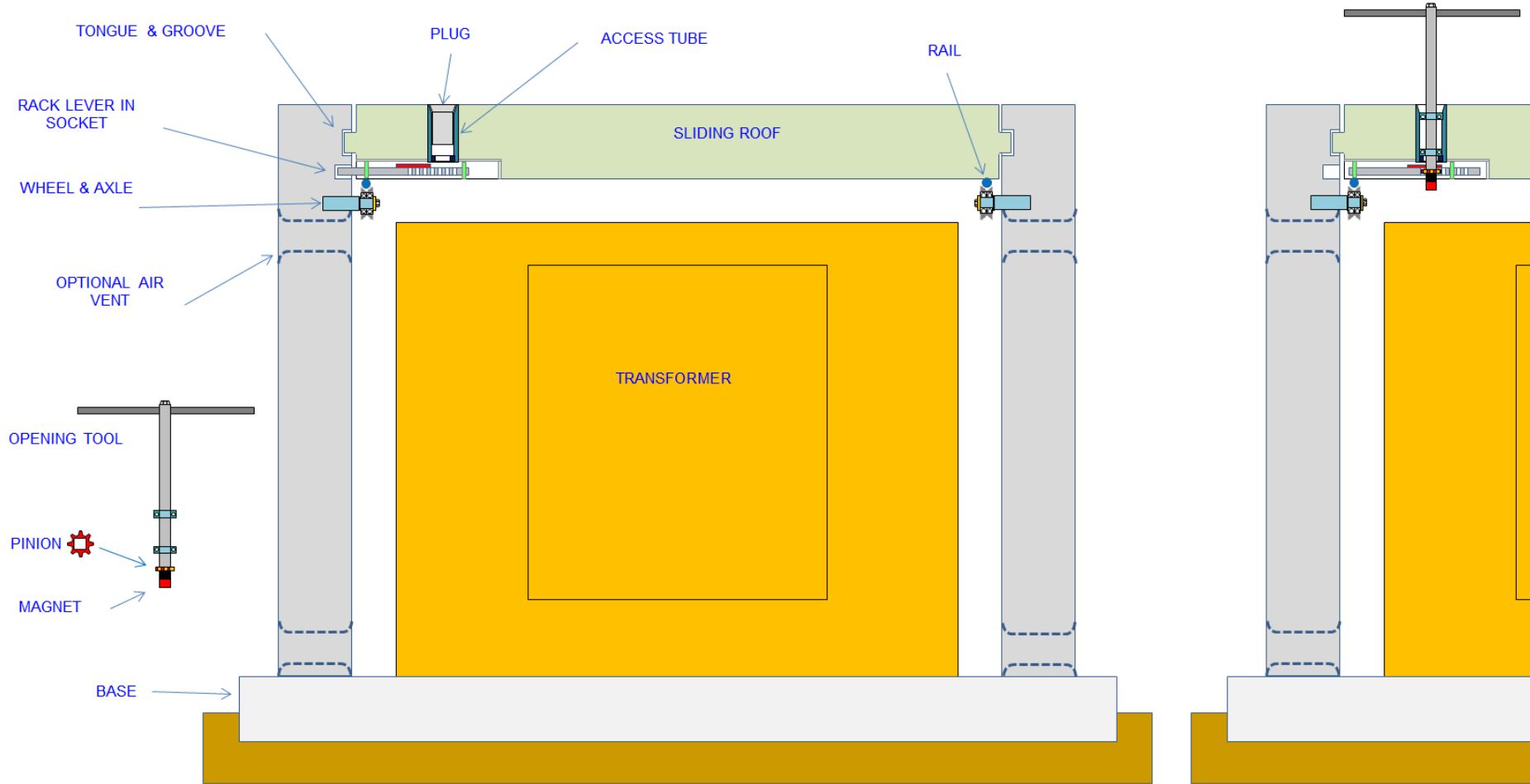


Fig 1 - closed & locked

Fig 2 - unlocked

OPENING SEQUENCE

Figure 1 shows the slide-lid vault in its fully locked configuration, while the vault is unlocked in figure 2, ready to slide open. The following actions are required to open the vault:

- Lift out the steel plug using the magnet of the opening tool.
- Insert the opening tool into access tube, through the spline disc, and on until it engages the rack-lever.
- Turn the handle of the opening tool so that the rack-lever retracts from the socket.
- The vault is now unlocked. To open it push or pull the lid in either direction, conveniently using the handle as a suitable hold.

The slide-lid vault is suitable for securing transformers & surface pumps, and is also an ideal valve chamber.

See www.damsforafrica.com for other products in our range, which are variously suitable for securing pump-houses, sub-stations, valve-chambers, control panels, boreholes, etc